

# COOPERATIVE

## CONNECTIONS



### Wall Meats Expansion

Reviving Local  
Meatcutting in  
New Underwood  
Pages 8-9

Cybersecurity on  
the Grid  
Pages 12-13

# BOARD REPORT



Your FEM Electric Board of Directors

A regular meeting of the Board of Directors of FEM Electric was held in Ipswich, South Dakota at 8:30 a.m. on March 19, 2024, pursuant to due call and notice. It being determined that a quorum was present, President Gary Bachman called the meeting to order. Secretary Eric Odenbach kept the minutes of the meeting. The following directors were declared present by roll call: Gary Bachman, Paula Petersen, Kelly Melius, Eric Odenbach, Tom Thorpe. Operations Manager Sean Christiansen, Director of Finance and Benefits Rhonda Tuscherer, Manager/CEO Scott Moore, Electrical Manager Ryan Holien and Journeyman Lineman Chad Dutenhoffer.

**Changes to the agenda:** None

**Changes/Additions to Minutes from February 23, 2024, meeting:** Gary Bachman reported under management and staff reports it should read acknowledged not approved. Moore mentioned a date change on January 16, 2024 minutes under financial should read December 2023 not December 2024. Corrections were made.

**Next Meeting Date:** After a review of calendars, directors agreed that the next regular meeting of the board would be on Monday April 15, 2024, at 8:30 a.m. to be held at FEM Electric Board Room in Ipswich, South Dakota.

Motion by Kelly Melius, seconded by Paula Petersen and carried to approve administrative business.

Motion by Eric Odenbach seconded by Tom Thorpe and carried to acknowledge manager and staff reports.

Board acknowledged the February 2024 Cyber Security Report.

**Resolutions and Contracts:**

Board acknowledged receipt for CFC Financial Expert Position board of director seat.

Board acknowledged receipt for RESCO Director Candidate Nomination.

**Membership Business:**

Board acknowledged membership business.

**New Memberships, Member Cancellations and Contracts:**

**Disconnects:** William & Diane Fischer, Forreston, IL, Pasture Pump; Hadrick Farms, Faulkton, SD, Grain Bin/Pasture Pump

**Reconnects:** Todd & Shonda Rau, Eureka, SD, Pasture Pump; Troy & Stacy Hadrick, Faulkton, SD, Grain Bin/Pasture Pump

**Contracts:** None

**Retired Locations:** None

**Capital Credits:**

**Estates – March 2024 – One = \$0 FEM** (clearing Basin/East River capital credits only)

**73 & Older – March 2024 – none**

Board acknowledged receipt of following financial business.

**Financial Business:** The board acknowledged reviewing the following financial information: The check register for the month of February 2024 contained information on checks #34130 through #34208 and all automatic payments/withdrawals for February 2024 totaling \$491,839.79.

Board acknowledged receipt of February 2024 financials.

Motion by Tom Thorpe seconded by Kelly Melius and carried to approve board expense reports and attorney fees.

**Legal Update:** none

**Meeting Report:**

East River board update was given by Gary Bachman.

Safety meeting minutes from February 21, 2024 were acknowledged.

Safety committee meetings from February 2, 2024 were acknowledged.

**Adjourn:** President Gary Bachman declared the meeting adjourned.





## COOPERATIVE CONNECTIONS

### FEM ELECTRIC ASSOCIATION

(USPS 189-720)

#### Board of Directors

Gary Bachman, President  
Tom Thorpe, Vice President  
Eric Odenbach, Secretary  
Paula Petersen, Treasurer  
Kelly Melius, Asst. Secretary/  
Treasurer  
Vaughn Beck, Attorney

#### CEO/General Manager

Scott Moore  
info@femelectric.coop

#### Management Staff

Sean Christiansen  
*Operations Manager*  
Ryan Holien  
*Electrical Department Manager*  
Rhonda Tuscherer  
*Director of Finance and  
Benefits*

#### Editor's e-mail:

oban@femelectric.coop

FEM ELECTRIC COOPERATIVE CONNECTIONS is the monthly publication for the members of FEM Electric Association, Inc., 800 5th Ave., Ipswich, SD 57451. FEM Electric Cooperative Connections' purpose is to provide reliable, helpful information to members on electric cooperative matters and better living.

Subscription information: As part of their membership, FEM members devote \$1.50 from their monthly electric payments for a subscription. Nonmember subscriptions are available for \$18 annually. (USPS 189-720) Periodical Postage Paid at Ipswich, SD 57451 and at additional offices.

POSTMASTER: Send address changes to FEM Electric Cooperative Connections, Box 468, Ipswich, SD 57451-0468.

#### How to contact us:

FEM Electric  
PO Box 468  
Ipswich, SD 57451  
Phone: 1-800-587-5880 or  
605-426-6891  
E-mail: info@femelectric.coop  
Website:  
www.femelectric.coop  
Design assistance by SDREA

**FEM Electric is an equal  
opportunity provider and  
employer.**



**Scott Moore**  
**General Manager/CEO**

FEM Electric has started 2024 strong both operationally and financially. Crews have been patrolling the line and with a lack of snow this project has went well allowing for crews to start some early maintenance. Operations Manager Sean Christiansen has been working with several pole testing contractors and will be choosing one to start testing poles in early summer 2024. The operations department along with electrical department have work to complete but nothing that is out of control or has been waiting to get completed. Supply chain shortages are still real, but FEM staff and employees seem to have the process and ability to keep the projects moving. I would suggest they do a good job planning along with our members. Getting involved in our members' projects helps.

Our annual audit has been completed by Eide Bailly and reported to FEM Electric board of directors. The process seems to go smoothly each year as multiple financial and written documents are

reviewed and examined. Good records and being organized helps get the audit completed. Many of these processes were started day one of FEM's existence and we may keep records differently (paper ledgers to self-created computer spreadsheets to computer programming used by multiple cooperatives) but results are the same. Clean audits come with good accurate records; FEM employees do a great job. Some may call it TEAMWORK.

On March 17, 2024, Alden Flakoll, a good mentor, past FEM Electric director, and board president, passed away. Alden, like many directors that have passed, was truly an advocate and true believer in rural electrics. He served on many additional boards relating to electric cooperatives and never shied away from a debate if it meant making situations better or more affordable for FEM Electric members. I always told new directors, when Alden was still on our board, if you can't find us just come front and center. In a crowd of thousands, three rows back from center stage is where you can find your FEM directors. Alden had a wealth of information on electric cooperative history and was always current on issues affecting rural electrics while he served.

If you are planning any electrical projects, please call Ryan Holien or Sean Christiansen 605-426-6891.

Spring is here. Please remember safety first. No short cut is worth a life.

## Statement Mailing Dates

May 29, 2024 for May's energy  
June 28, 2024 for June's energy

Regardless of the statement mail out date, payments are due in the office by the 9th of the following month.

# Your Safety Matters

## Prevent home electrical fires

Eight out of 10 fire-related deaths occur at home – the place that embodies comfort and security. That’s why it’s important to take steps to keep everyone safe.

Faulty or deteriorating electrical cords are a top cause of fires at home. Cords that become frayed or cracked can send sparks to flammable surfaces. Check your cords to ensure that they are in good shape, and replace any that are worn.

In addition, make sure you are not overloading circuits. If you’ve been in your home for more than 10 years, have your circuit breaker box inspected by a licensed electrician to tighten loose connections and check for overloaded circuits.



Homes with copper wiring need to be inspected every 20 years, and homes with aluminum wiring should be inspected every five years.

Check all Ground Fault Circuit Interrupter (GFCI) outlets several times each year by pushing the test/reset button to be sure they are working properly.

If breakers are continually tripping or if fuses are blowing frequently, that’s a sign of potential trouble. The cause could be old wiring unable to handle the load demand of today’s modern appliances. If needed, ask a licensed electrician to install additional circuits for safety.

Use surge protectors and power bars to help prevent overloading an electrical outlet, plugging no more than three cords into the strip.

May is National Electrical Safety Month. We urge you to take the time and steps needed to lower the risks of electrical fires. Keep your family safe.



### Stay Away from Power Lines

#### Weston Koistinen, Age 6

Weston Koistinen warns readers to be safe by staying away from power lines. Weston’s parents are Dion and Stephanie Koistinen, members of H-D Electric Cooperative.

Kids, send your drawing with an electrical safety tip to your local electric cooperative (address found on Page 3). If your poster is published, you’ll receive a prize. All entries must include your name, age, mailing address and the names of your parents. Colored drawings are encouraged.



# SUMMER CASSEROLES

## BREAKFAST CASSEROLE

### Ingredients:

- 1 5 oz. package croutons, any flavor
- 2 cup sharp Cheddar cheese, shredded
- 1 lb. sausage, fried and drained
- 9 eggs
- 1 can evaporated milk
- 1 tbsp. mustard

### Method

Spray 9x13 pan with vegetable oil. Arrange croutons on bottom. Sprinkle cheese over croutons and put sausage over cheese. Combine eggs, milk and mustard. Beat to blend and pour into pan. Bake covered at 350 degrees for 45 minutes.

Janet Ochsner  
Box Elder, S.D.

## CHICKEN CASSEROLE

### Ingredients:

- 1 package Chicken Stove Top Stuffing mix
- 3 cups cooked cut up chicken
- 1 can cream of mushroom soup
- 2/3 cup milk
- 1 can cream of chicken soup
- 2 eggs, beaten
- 2 cups chicken broth

### Method

Grease a 9x13 pan and put 1/2 of the stuffing mix in the pan. Cover with chicken. Combine soups and milk and spoon over chicken. Spread other 1/2 of stuffing over the top. Pour 2 cups of chicken broth over all and spread with beaten eggs. Bake at 350 degrees for 1 hour.

Gail Lee  
Brookings, S.D.

## TACO CASSEROLE

### Ingredients:

- 1 1/2 lbs. ground beef
- 1 package taco seasoning mix
- 1 can (16 oz.) pinto beans, drained and rinsed
- 1 can (15 oz.) tomato sauce
- 1 can (11 oz.) whole kernel corn, drained
- 1 cup shredded Cheddar cheese
- 1 cup coarsely crushed tortilla chips

### Method

Preheat oven to 400°F. Brown meat in large skillet on medium-high heat. Drain fat. Stir in seasoning mix, beans, tomato sauce and corn. Bring to boil. Reduce heat to low; simmer 5 minutes. Spoon into 2-quart baking dish. Sprinkle with cheese and tortilla chips. Bake 5 to 10 minutes or until cheese is melted. Serve with assorted toppings, if desired.

McCormick

Please send your favorite recipes to your local electric cooperative (address found on Page 3). Each recipe printed will be entered into a drawing for a prize in December 2024. All entries must include your name, mailing address, phone number and cooperative name.





Dear FEM-

Thank you so much for the 4 cases of water and napkins! The water will be an asset to our fun-run! Thank you so much again from Eureka Fest Committee.  
♡



To the Lineman Staff,  
First and foremost, thank you for discovering I had some electrical line problems over my house.  
Thank you for your service and care of a FEM member.  
Wanda Gledson



**Thank you**  
Thank you so much for the scholarship money. It has been very useful as I pursue a degree in psychology at Washburn.  
Ashley Ptacek

## Presents the 2024 YOUTH TOUR JUNE 15-21

### THREE HIGH SCHOOL STUDENTS SELECTED TO REPRESENT FEM ON THE 2024 YOUTH TOUR TO WASHINGTON D.C..



**Hannah Beyers** submitted one of three winning applications for the 2024 Youth Tour. She is a senior at Ipswich High School, and is the daughter of Doug and Amber Beyers.

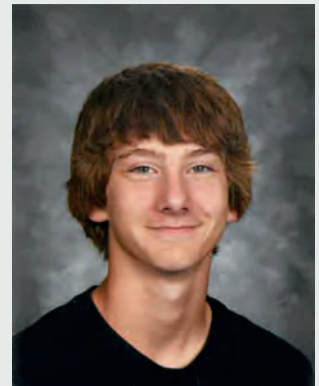
Hannah is involved in 4-H, Cheerleading, FBLA, National Honor Society, and dance. She was also a Girl's State Delegate in 2024. Outside of school, she enjoys helping on her family's farm as well as learning about history. In the fall, she plans to attend Lake Are Technical College for Occupational Therapy Assisting.

On the trip, Hannah believes that she will learn what happens behind the scenes, and what processes are taken every day to keep the country running. She also hopes to learn how rural electric cooperatives are critical to the US, and how well it runs.

**Chase Melius** was selected as another Youth Tour attendee for 2024. He is a junior at Faulkton High School, and is the son of Kelly and Dawn Melius.

Chase is highly involved in ag, taking any ag class he can at school, is in FFA, and is in the Farmer's Union youth program. He was recently selected to be on the Farmer's Union State Junior Advisory Council. He's also active in shooting sports, football, and golf.

While in Washington D.C., Chase hopes to learn more about cooperatives, and how they work together to make a difference. He believes that this trip will be a great learning experience, and what he learns may help him make a difference in the future.



**Jessica Hadrick** also submitted a winning application to attend the Youth Tour. She is a junior at Faulkton High School, and is the daughter of Trisha and David Hadrick.

At school, Jessica is involved in FFA, Oral Interpretation, Competition Cheer, One Act Play, All-School Play, and track. Outside of school, she plays piano and softball, and has worked various jobs in her community. Jessica does not have concrete plans for college yet, but is interested in becoming a lawyer.

Jessica believes that students should learn about government and how it works before voting, and thinks the Youth Tour will encourage that. She's also interested in learning more about cooperatives and the cooperative business model. Given her interest in law, she's excited to visit Washington D.C.







Patsy Besson helps package fresh cuts of meat at the Wall Meat Processing plant.  
Photo Credit: Shannon Marvel

---

## Wall Meats Revives Local Meatcutting in South Dakota Through New Underwood Expansion

**Shannon Marvel**

shannon.marvel@sdrea.coop

A local meat processing plant is expanding its footprint in Pennington County in a way that will put more locally produced protein on dinner tables and bolster the local meat processing workforce throughout South Dakota.

The man behind this plan is local business owner Ken Charfauros, who owns Wall Meat Processing, which has locations in Wall and Rapid City.

Charfauros is currently raising funds through a capital drive campaign to finance the construction of a 30,000 square foot meat processing facility in New Underwood. The new facility will help train the next generation of meat processors through a partnership with Western Dakota Tech in Rapid City.

“We are at \$2.8 million in our drive. We also have the \$3.3 million USDA Rural Development grant, which is a meat and poultry expansion plan grant. We are about \$200,000 short of our goal,” Charfauros said.

He added that the New Underwood processing plant will also use funding from the Meat and Poultry Intermediary Lending Program (MPILP), which according to the USDA’s website “provides grant funding to intermediary lenders who finance – or plan to finance – the start-up, expansion, or operation of slaughter, or other processing of meat and poultry. The objective of the MPILP is to strengthen the financing capacity for independent meat processors, and to create a more resilient, diverse, and secure U.S. food supply chain.”

Charfauros said he’s still meeting with potential investors and has a financial team focused on creating relationships with local ag producers.

“After we get our capital drive, the plan itself will be about \$21 million,” he added. “And then we start the project. The groundbreaking is going to happen in about a year and the facility will begin operations six months after that.”

Charfauros said he expects to purchase the property to site the new plant this spring.

### Returning to a Passion

Wall Meats Processing opened for business 57 years ago, but



Charfauros took ownership over the facility in 2017. His passion for meat cutting began when he was a teenager while working for a local meat plant in Delaware.

“It was my high school job and I loved it. After I graduated high school, I felt that my country needed me, so I joined the Air Force and did 30 years. But I always missed that part of my life,” Charfauros recalled.

“A guy that taught me how to cut was like my second dad, and I always wanted to come back to it. My son had just graduated from South Dakota State University, and I had retired from the Air Force. That’s when we decided to buy a plant.”

His son manages the store in Rapid City while Ken’s three nephews help run the family’s businesses in Wall, which include Wall Meats and the Red Rock restaurant.

## Supporting Local Producers

Building the new facility has been a challenging venture that’s been years in the making.

“We started building this plan about four years ago, then COVID hit and got in our way. Then, we were lucky enough to get those grant awards last year, and ever since we have been working diligently to get the format right,” Charfauros said.

“I have drawings. I have an equipment list all put together — everything is ready to go except for this capital drive that we are undergoing.”

Charfauros said he has been meeting with both potential and locked-in investors daily over the last year to produce the required financing.

“We have met with over 600 people with 99 percent of those people being producers, because this is all for them. This plant offers them premium pricing above the market rates,” Charfauros said.

While the cattle market is high now, Charfauros remains realistic that the market can change for the worse.

While he hopes the market remains high enough for producers to survive, his partnership with producers will serve as

added security. That means the partnership must be tightknit.

He knows he cannot do it alone.

## Reviving a Dying Art

“Meat cutting is a dying art, and we teach meat processing at our store in Rapid City to bring that art back. We’re trying to fight for that industry as it is,” he said.

Three meat processing students are currently being taught at the Rapid City facility through a partnership with Western Dakota Tech, which recently began offering the two-year program.

Pam Stillman-Rokusek, director of communications and marketing at Western Dakota Tech, said three students are currently enrolled in the Meat Processing program. Of those three, two will graduate in May.

But the college is still working on more outreach.

“Enrollment has been a bit low in the program, so the plan is for a hiatus this fall. They’ll revamp the curriculum. Then, we will certainly do additional outreach. We have done advertising, gone to the schools. We have reached out to 4-H

groups and done some traveling, but we need to turn it up a notch to produce more students in the program. That is our goal,” Stillman-Rokusek said.

Despite the Meat Processing program being put on hiatus, the school will still ensure that the remaining student completes the program while actively working on developing the program and outreach methods.

“There’s such a high need for meat processors and we’re looking at different ways to fill that gap. It’s something we’re committed to doing,” she added.

The goal is to enroll at least five students in the following school years when the program restarts.

The learning center that will be built within the New Underwood facility will also teach producers, in addition to students, the art of meat cutting.

“We are trying to bring that industry back to what it should be—regionally processed protein,” Charfauros said.

“That means we must build the environment to spark that passion. In anything you do, you need to learn how to do it the right way.”



Wall Meat Processing plant, established in 1957. Photo Credit: Shannon Marvel



# 76th ANNUAL MEETING

**TUESDAY, JUNE 25TH**  
**Dinner @ 5:00 PM**  
**Meeting @ 6:30 PM**  
**Ipswich School**

## **DON'T MISS THE 76TH ANNUAL MEETING OF THE FEM MEMBERSHIP**

---

### **District 5 Director up for Election**

Club Sandwiches, Mac n Cheese Pulled Pork, and  
Baked Steak

**\$500 YOUNG ADULTS LIGHT THE WAY SCHOLARSHIP**

High School Junior and Seniors eligible

*Must attend entire meeting with at least one member parent*

**\$40 ENERGY CREDIT TO ALL MEMBERS  
WHO ATTEND THE ENTIRE MEETING**

**PLUS \$500 IN GRAND PRIZE DRAWINGS WILL BE  
GIVEN AWAY**

***MUST BE PRESENT TO WIN!***

**Keep Up to Date with Your Cooperative**

---



# FIRST RESPONDER TRAINING

## A NEW WAVE OF VEHICLES ON THE MARKET REQUIRES NEW SAFETY TRAINING

As many have heard, the automotive industry is transitioning many, or all, of their new vehicles to electric-only models over the next decade. With that transition well underway, there comes new challenges and learning opportunities not only for vehicle owners, but for first responders.

Which is why on March 2nd, the Roscoe Volunteer Fire Department hosted a training for all Edmunds County First Responders pertaining to electric vehicle accidents and fires. The training was conducted by Leroy Ainslie with Rural Fire Training Services. FEM Electric assisted by obtaining East River Electric's Ford Mustang Mach E, which is a fully electric vehicle (or EV).



Over the course of the day, first responders had classroom and hands on training, learning how EVs are vastly different than combustion engine vehicles. One of the most notable differences is how EV batteries are designed, and how difficult it may be to put out an EV fire. For instance, EV batteries are made up of smaller, tightly packed lithium ion batteries that are enclosed in a larger casing. If one of these small EV batteries



is damaged by extreme heat, punctures or excess current, the battery will begin what is known as thermal runaway. This process is almost impossible to stop, and due to the tightly packed nature of the batteries, almost impossible to put out with water, which is why first responders were taught to let EVs burn under closely monitored conditions.



Not only that, but batteries that are in thermal runaway, yet not on fire, can release a smoke that is highly toxic. Crews were taught to be prepared for this potential when responding to calls. When there are flames, however, much of the harmful chemicals are burned away. In addition, First Responders were taught that if they did need to put out a burning EV to stop a fire from spreading, they should only use water. After, they would likely need to call in a hazard unit to clean up any chemicals spread by water used to contain the fire.



Aside from learning how to handle EV fires, First Responders learned how to properly rescue victims in EV accidents.

With changing times comes new learning opportunities and FEM was glad to assist with East River Electric's help!



# CYBERSECURITY ON THE GRID

**Frank Turner**

frank.turner@sdrea.coop

Imagine sitting at your desk on a typical Monday morning. You have logged into your computer with coffee in hand, ready to tackle the day. But as you begin, your computer displays an ominous message: “Your files have been encrypted. Pay a ransom to regain access.” It’s not just your computer; your co-workers have received the same message. Overnight, the entire office has fallen victim

to a ransomware attack that has locked away critical data. Your office computers will remain unusable until a payment is made.

This scenario, among others, has become a primary concern for workplaces everywhere, including electric cooperatives. As a result, local co-ops are taking action in the cybersecurity space to prevent bad actors from disrupting the critical goal of delivering power that is safe, affordable and reliable to their members. Electric co-ops are focused

on enhancing cybersecurity resilience and readiness to defend against potential cyber threats.

Co-ops are routinely monitoring and managing cyber risks, working with federal and local law enforcement agencies and the North American Electric Reliability Corp. to protect critical infrastructure. By working as a network, co-ops are enhancing grid resilience, ensuring reliable electricity for their members.

According to an FBI Internet Crime Report, the U.S. reported more than \$12.5 billion in annual losses in 2023 due to cyberattacks like the one described. A significant number of these attacks target the elderly and vulnerable. When breaking down the losses by age group, individuals aged



20 to 29 accounted for \$360.7 million of the total losses, while those 60 and older incurred losses of \$3.4 billion in 2023 alone.

And it's not just about the money. These attacks also have the potential to undermine the stability of entire systems, including the electrical grid. This year, directors of the FBI, NSA, and CISA testified before Congress about Chinese Communist Party hacking groups that had gained access to the electric grid and other critical infrastructure to "wreak havoc and cause real-world harm to American citizens and communities."

"Many cyberattacks are conducted by criminals trying to steal money or collect a ransom," explains Chief Security and Compliance Officer Daniel Graham of Basin Electric Power Cooperative. "Nation-states

target electric utilities for different reasons. Some nation-states want to steal intellectual property. Others want to be able to disrupt our electric grid."

So how is it done? To execute their schemes, bad actors employ a long list of complex strategies and techniques, such as phishing, data breaches and malware to adversely impact their targets. Business email compromise, one of the most common techniques, occurs when an impostor poses as a legitimate business contact, seeking to steal sensitive information such as credit card numbers, bank account information or login credentials.

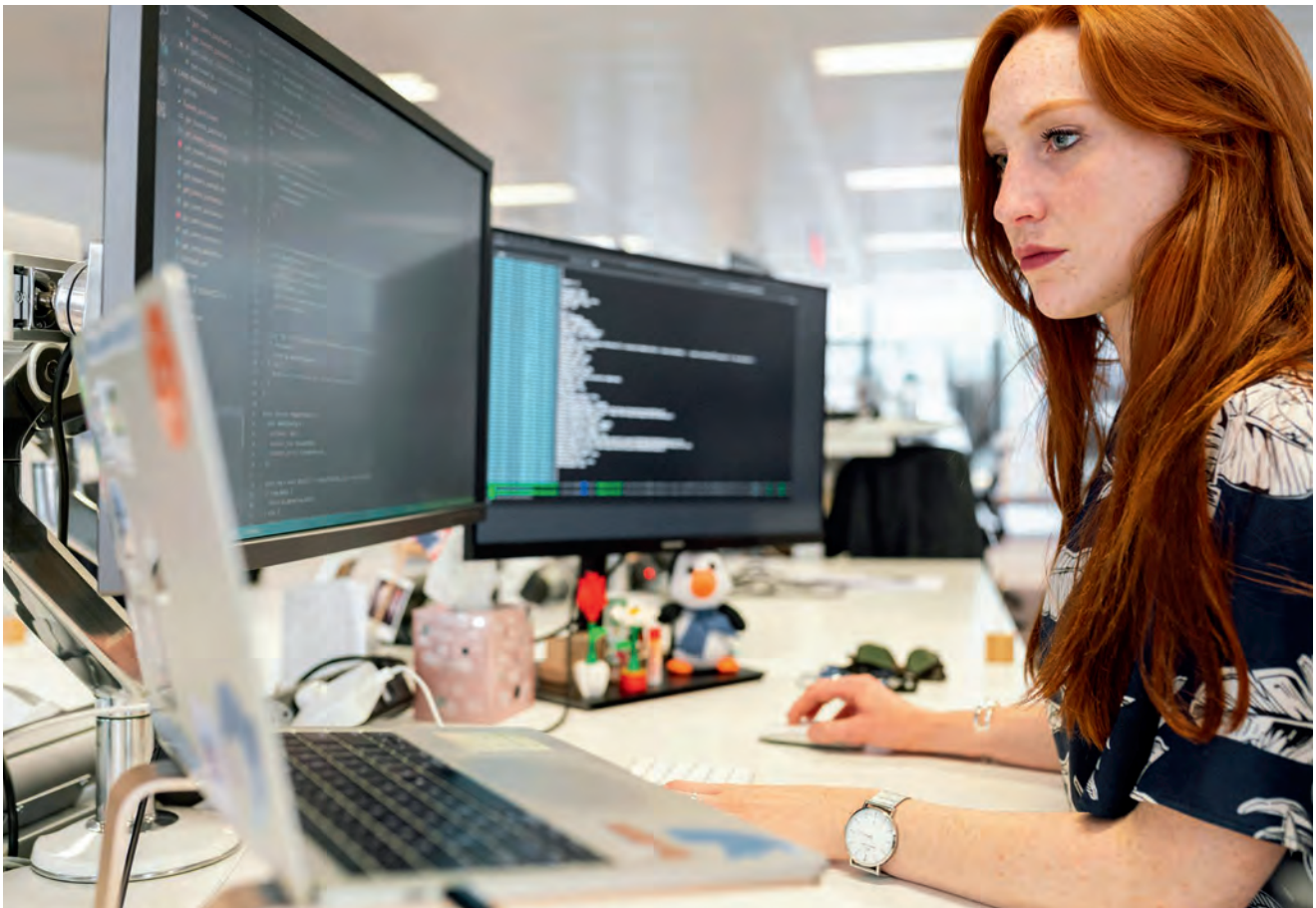
Luckily, co-ops are implementing a variety of tools, policies and training to help mitigate attacks and secure the grid. Programs like NRECA's Co-op Cyber Goals Program help co-ops build fundamental cybersecurity

measures, such as employee training, developing cyber incident response plans, and regular self-assessment. These strategies help co-ops reduce the risk of a successful cyberattack in the ongoing battle against cybercrime.

"Additionally, co-ops can conduct cybersecurity exercises to determine the effectiveness of current defenses and practice responses," Graham says.

Despite these efforts, the threat of a successful cyberattack persists, making vigilance an essential component of effective cybersecurity.

"If you see something suspicious, report it to your cooperative," explains Graham. "Electric co-ops are an essential part of our country's critical infrastructure. We can best protect our electric grid by working with each other."



## 2024 SCHOLARSHIP WINNERS

**AFTER REVIEWING NUMEROUS SCHOLARSHIP APPLICATIONS, FEM IS PROUD TO PRESENT THE 2024 SCHOLARSHIP WINNERS.**



**Addison Melius** submitted the winning application for the \$1000 Basin/FEM Electric Scholarship. She is a senior at Faulkton High School, and is the daughter of Ryan and Nikkie Melius.

Addison is involved in volleyball, track and field, basketball, All School Play, FCCLA, 4-H, student government, and choir. She is also involved in her church, and has completed 12 college credits as well as a Pharmaceutical internship.

Addison has plans to attend South Dakota State University when she graduates this spring. She wants to pursue a degree in Exercise Science. Exercise Science has played a huge role in her life, as she was injured during her sophomore year of high school. She has spent time job shadowing a physical therapist and an athletic trainer. Because of these experiences, she now has an appreciation for the field and understands the level of discipline and collaboration that comes with being in Exercise Science.

FEM Electric wishes to extend a hearty congratulations to Addison Melius, and wishes her well on her future endeavors.

**Parker Bode** is one of the recipients of the \$500 FEM Electric Scholarship. He is a senior at Faulkton High School and is the son of Heather and John Bode.

Parker is active in football, wrestling and golf. In football, he achieved academic all state, and was a four time LRC Champion for wrestling. In all three sports, he is a four time letter winner. Parker is also part of the National Honor Society. In his free time, he is a Church Lector, involved in 4-H and is a FFA four time Chapter Officer.

Once he graduates in the spring, Parker plans to attend South Dakota State University to major in Agricultural Engineering. From there, he would like to work with one of the main equipment manufactures in America. FEM Electric would like to congratulate Parker for his hard work and dedication, and wishes him luck!



**Olivia Hadrick** also won a \$500 FEM Electric Scholarship. She is a senior at Faulkton High School, and her parents are Troy and Stacy Hadrick.

Olivia heavily involved in sports such as cross country, basketball, and track has lettered in each. She is also the captain of the cross country and basketball teams. Olivia is involved in FFA, NHS and All School Play. Within her community, Olivia is active in her church youth group, Snow Queen, 4-H and Girls State.

After she graduates, Olivia plans to attend South Dakota State University to study Animal Science. She hopes to bring back valuable information for her family's ranch, and to someday take over the cattle operation. Congratulations to Olivia, and FEM wishes her the best of luck!





# CAPITAL CREDIT NOTICES

By the end of April, FEM will have sent out capital credit allocation notices to both active members (those who are currently purchasing power from FEM) and inactive members (those who purchased power for a portion of 2023, but do not as of 2024).

For each type of member, those notices look different. For example, active members will receive their notice on their April Statement. FEM has provided a sample statement that depicts what the capital credit allocation notice looks like for them.

In the message portion of the April statement, member's will see their 2023 allocation breakdown (outlined in red).

1. Members can see what their previous balance of allocations was prior to 2023. This total can consist of up to 18 years of allocations.
2. A breakdown of where member allocations are coming from.
3. Balance after 2023 allocations.



Office Hours: Monday - Friday 8:00 - 4:30  
 Phone: 605.426.6891 or 800.587.5880  
 Pay by Phone: 833.699.1827  
 Website: femelectric.coop

JOHN DOE  
 JANE DOE  
 1234 ANYWHERE ST.  
 ANYWHERE, USA 12345



Page 1 of 2

Statement Date	04/26/2024
Account Number	1234567
Payment Due 05/09/2023	

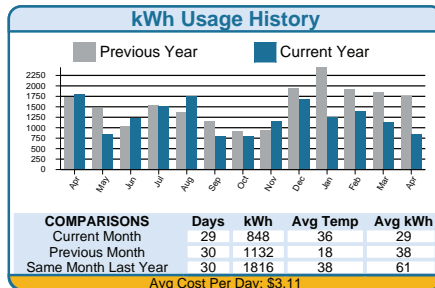
Service Summary	
Previous Balance	190.60
Payments Received 04/03/2024	-190.60
Balance Forward	0.00
Current Charges	158.96
<b>Total Amount Due</b>	<b>158.96</b>

**Message from FEM**

**YOUR 2023 CAPITAL CREDIT ALLOCATION**

①	<b>Beginning Balance:</b>	<b>\$3,478.00</b>
②	<b>FEM Allocation:</b>	<b>\$228.94</b>
③	<b>East River Allocation:</b>	<b>\$80.49</b>
	<b>Basin Allocation:</b>	<b>\$259.98</b>
	<b>ENDING BALANCE:</b>	<b>\$4,047.41</b>

Meter #	From	To	Days	Previous	Present	Meter Multiplier	kWh Usage	kW Usage
87773546	03/29/2023	04/27/2023	29	54329	55177	1.0	848	0.0
6403	03/29/2023	04/26/2023	28	74522	74534	1.0	12	0.0



Current Service Detail		
Availability Charge		62.00
Kwh Charge	836 kWh @ .1070	89.45
Kwh Charge	12 kWh @ .0550	0.66
<b>Total Electric Charges</b>		<b>152.11</b>
Water Heater Credit		-5.00
Heat Meter Charge		5.00
State Tax		6.85
<b>Total Other Charges</b>		<b>6.85</b>
<b>Total Amount Due</b>		<b>158.96</b>

**\*\* A finance charge of 1.5% per month or a minimum of \$15.00 per location will be assessed if payment is not received by the date due.**

FEM is also a member of Basin and East River Electric, both of which are cooperatives. Being a member of a cooperative means that each member has a share in the ownership, construction, and maintenance of the cooperative. This also means that members will receive a portion of the net margins (or funds leftover after expenses) back in the form of a capital credit allocation. Each member's portion is determined by the amount of energy they used the previous year (2023). This money is set aside for the co-op to continue to use as operating capital for improvements and maintenance over a number of years. Each co-op has their own set number of years before they return capital credits in the form of a retirement.

Allocations are not the same as capital credit retirements. Capital credit retirements occur in June if the FEM Board of Directors feels the financial health of FEM Electric is in good standing. Retirements are made from allocations from previous years, including allocations from up to 18 years ago. Members will see their capital credit retirements as a credit on their June statement.

Inactive members will receive a separate letter in the mail listing the same information as provided on active member's statements. However, after 2024, they will no longer receive notices, unless they begin to purchase power from FEM again. Inactive members will still receive retirements, but only if there's a balance remaining in their capital credit account.

FEM is able to operate successfully because of our members participation, and capital credits is a way for us to give back.



**MAY 11, 2024**  
**Cinco de Mayo Fiesta**  
 Falls Park  
 Sioux Falls, SD

**MAY 4**  
**Groton City Wide Rummage Sale**  
 Groton, SD

**MAY 11-SEPT.28**  
**Malchow Plaza Farmers Market**  
 Saturdays, 8:30 a.m.-12 p.m.  
 Main Street  
 Aberdeen, SD

**MAY 18-28**  
**Free Amish Carriage & Buggy Rides**  
 10 a.m.-4 p.m. every Saturday  
 Buggy & Ag Museums  
 Stockholm, SD

**MAY 18**  
**Prairie Partners Master Gardeners Plant Sale**  
 9 a.m.  
 Brown County Fairgrounds  
 Aberdeen, SD

**MAY 27**  
**Memorial Day Services**  
 12 p.m.  
 Groton Union Cemetary with lunch at Legion Post #391  
 Groton, SD

**JUNE 1**  
**Blessed Sacrament Pastorate-Wide Celebration**  
 3:30 p.m.  
 Aberdeen Civic Center  
 Aberdeen, SD  
 605-216-2081

**JUNE 1**  
**Eureka City Wide Rummage Sale & Farmer's Market**  
 Eureka, SD

**JUNE 9**  
**Brookings Car Show**  
 11:30 a.m.-3 p.m.  
 Pioneer Park  
 Brookings, SD

**JUNE 12-13**  
**Rangeland & Soil Days Contest**  
 Codington County Extension Building  
 Watertown, SD

**JUNE 14-16**  
**Ipswich Trail Days**  
 Ipswich, SD  
 ipswichtraildays.com

**JUNE 28-30**  
**Bowdle Tower Days**  
 Bowdle, S

**JUNE 20**  
**Prairie Partners Master Gardeners Garden Walk**  
 Aberdeen, SD

**JUNE 22-23**  
**"Our Place: 15 Years of Onaka" Photography Exhibit**  
 11 a.m.-6 p.m. Sat.  
 12-4p.m. Sunday  
 Onaka Community Hall  
 Onaka, SD

**JUNE 26-29**  
**Crystal Springs Rodeo**  
 Clear Lake, SD  
 605-874-2996

**JULY 13**  
**9th Annual Auto Value Car Show**  
 11 a.m.-4 p.m.  
 Hav-A-Rest Campground  
 Redfield, SD

**JULY 14**  
**Lion's Club Summer Fest/ Car Show**  
 9 a.m.-4 p.m.  
 Groton City Park  
 Groton, SD

**JULY 20**  
**21st Annual "On the Road to Wishes" Poker Run for Make a Wish**  
 10:30 a.m.  
 Bieglers Motors/CNS Motor Sports  
 Aberdeen, SD

**JULY 26-27**  
**Eurekafest**  
 Eureka, SD

**JULY 26-28**  
**Clear Lake Days**  
 ClearLakeDays.com  
 Clear Lake, SD

**AUG. 8**  
**Family Fun Fest**  
 5:30-7:30 p.m.  
 Groton, SD

To have your event listed on this page, send complete information, including date, event, place and contact to your local electric cooperative. Include your name, address and daytime telephone number. Information must be submitted at least eight weeks prior to your event. Please call ahead to confirm date, time and location of event.

**Note: Please make sure to call ahead to verify the event is still being held.**